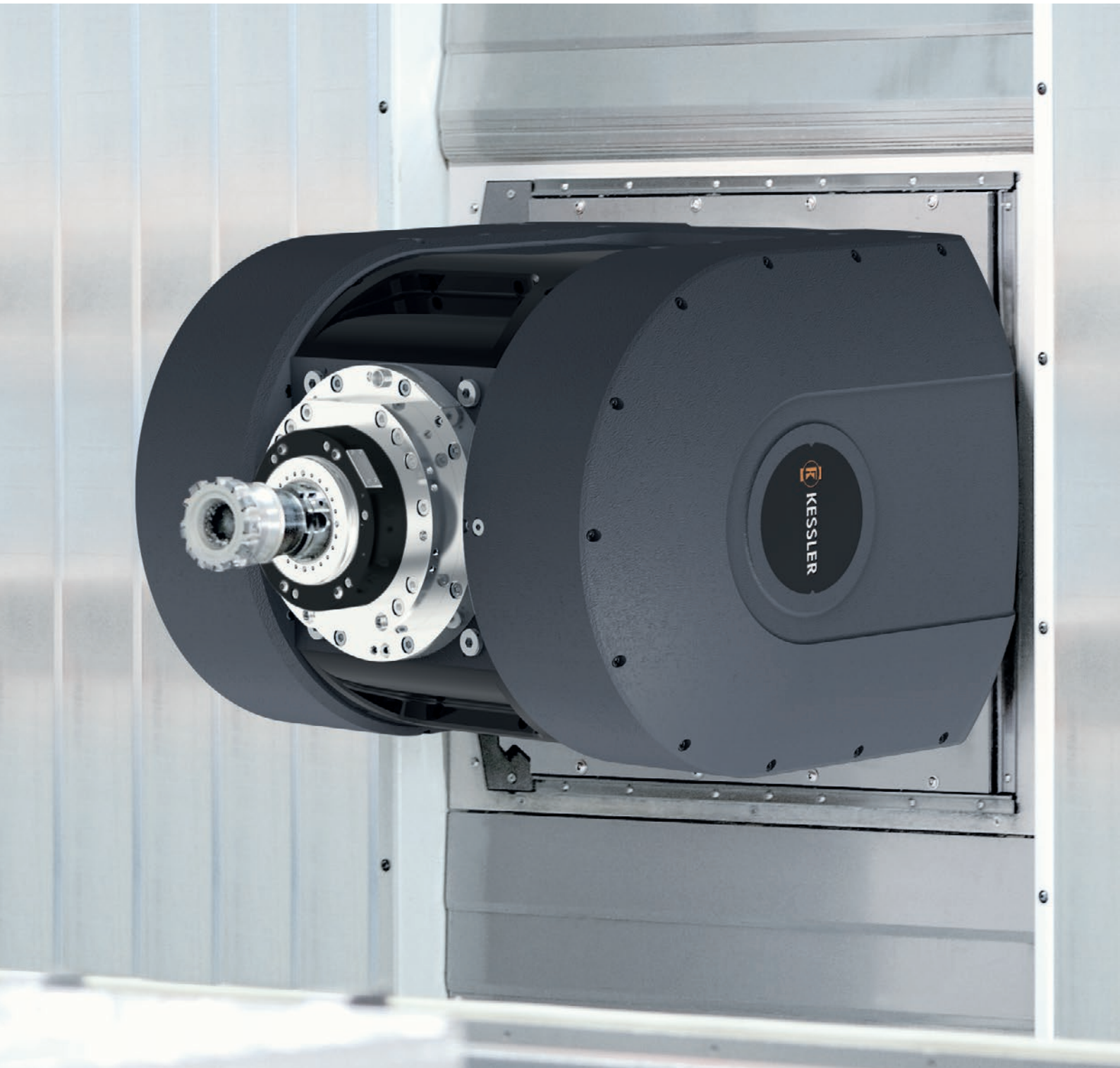


Milling spindles / HC LINE

Cutting of difficult to machine materials



KESSLER SPINDLELINES

Spindle technology with passion and expertise

The KESSLER milling spindles have a modular design.

Configure your own milling spindle model by specifying the installation position, motor, speed, bearing, lubrication and sensor system – the perfect customized solution for your individual branch and application needs.

KESSLER offers more: We are an internationally successful company with specialist expertise that enables us to provide comprehensive consultation in the design and manufacture of individual components, and project planning of complex systems. We use the very latest technology and analytical processes to test our components under realistic conditions, so that our products help your business to stay flexible and maintain its competitive edge.

Our in-house development division is supported by extensive calculation and analysis skills and covers everything from direct drive technology to the construction of all-in-one systems. Furthermore, optimized production and assembly lines provide the framework for stable processes and the superior quality of our products.

End-to-end precision from the components to the on-site service






Founded in 1923 by Franz Kessler, the company has developed to become the leading supplier of motor spindles as well as directly driven 2-axis heads and rotary tilt tables for the machine tool industry. KESSLER is proud to list many major companies from the mechanical engineering sector amongst its long-standing customers.

With the expertise of almost 100 years, KESSLER is continuously developing and optimising its products. The KESSLER product range serves a wide range of sectors, processes and applications. Close cooperation with our customers remains our key focus. The extensive product range, from hightech spindles, 2-axis heads, rotary and rotary tilt tables to motors and direct drive systems, enables KESSLER to implement customised solutions with speed and flexibility.

As your service partner, service is our matter of trust and reliability. KESSLER has an established global network of technology and service centres.

Masterpieces

KESSLER provides tailor-made spindle technology to suit your needs:
Individual, flexible, modular and suitable for all areas of application

HCLINE								HC500	HC600
PCLINE	PC80	PC100				PC400			
HLINE	H80	H100	H200						
MTLINE	MT80			MT100			MT400	MT500	MT600
VLINE				V100	V200	V400			

Spindle fitting Ø (mm)

○ Open cooling housing	170	170		200		230	270	325	395
○ Closed with steel sleeve		180		210		240			
○ Closed with solid housing			200	230	240		310		

Availability on request

The HCLINE is all about:

- 5-axis-cutting
- Use in two-axis heads
- Cutting of difficult to machine materials
- Machining of workpieces with varying geometries
- Use in small and large-scale production
- Optional clamps for turning operations
- Optional measuring of the axial shaft displacement

Milling spindle / HC500

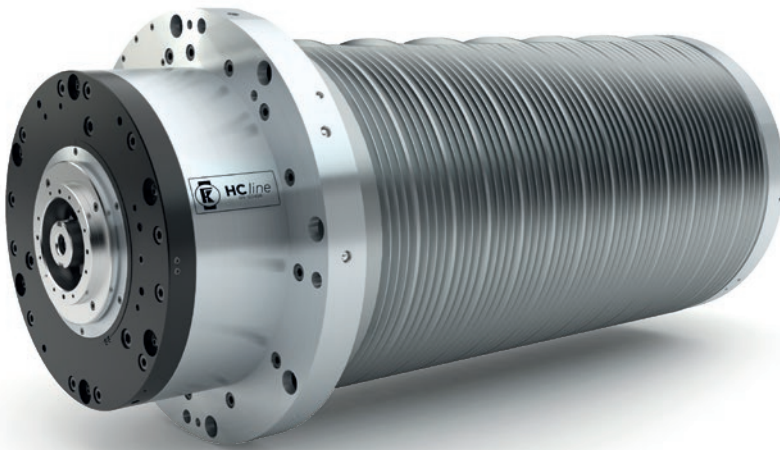
- Spindle fitting: Ø 325 mm
- **KESSLER COOLMOTION®** motor
- **Cooling:** Open cooling housing
- **Bearing lubrication:** Oil-air

Modular extensions available

- + **Choose the most suitable KESSLER COOLMOTION® motor for your needs**
- + **Sensor monitoring system**
 - Vibration sensor
 - Eddy current sensor detects axial shaft displacement
 - Clamping status monitoring
 - Clamping monitoring
 - Temperature sensor PT100
- + **Hydraulic clamping**
- + **Bearing preload** variable
- + **Closed cooling jacket**

Accessories

- + **Oil-air lubrication unit**
- + **Re-greasing unit**
- + **Direct lubrication on demand**



Choose the most suitable **COOLMOTION®** motor from the list of preferred motors

Model		S1		S6 / 40 %		S6 / 25 %		S6 max.		
	Max. speed (rpm)	Torque (Nm)	Power (kW)	Torque (Nm)	Power (kW)	Torque (Nm)	Power (kW)	Torque (Nm)	Power (kW)	
HC500-S6	6,000	800	67	930	67	1,000	67	1,100	67	HSK A100

Milling spindle / HC600

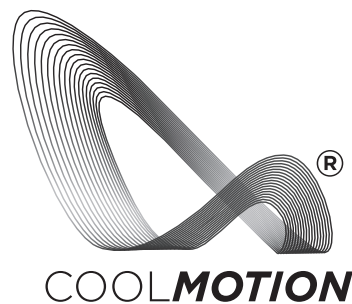
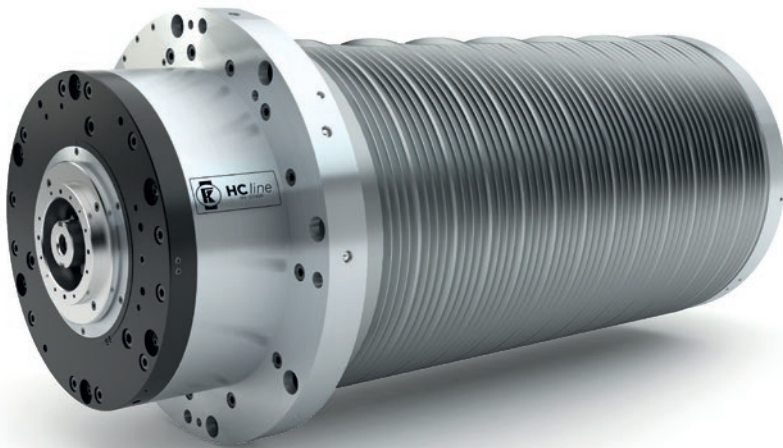
- Spindle fitting: Ø 395 mm
- **KESSLER COOLMOTION®** motor
- **Cooling:** Open cooling housing
- **Bearing lubrication:** Oil-air

Modular extensions available

- + **Choose the most suitable KESSLER COOLMOTION® motor for your needs**
- + **Sensor monitoring system**
 - Vibration sensor
 - Eddy current sensor detects axial shaft displacement
 - Clamping status monitoring
 - Clamping monitoring
 - Temperature sensor PT100
- + **Hydraulic clamping**
- + **Bearing preload** variable
- + **Closed cooling jacket**

Accessories

- + **Oil-air lubrication unit**
- + **Re-greasing unit**
- + **Direct lubrication on demand**

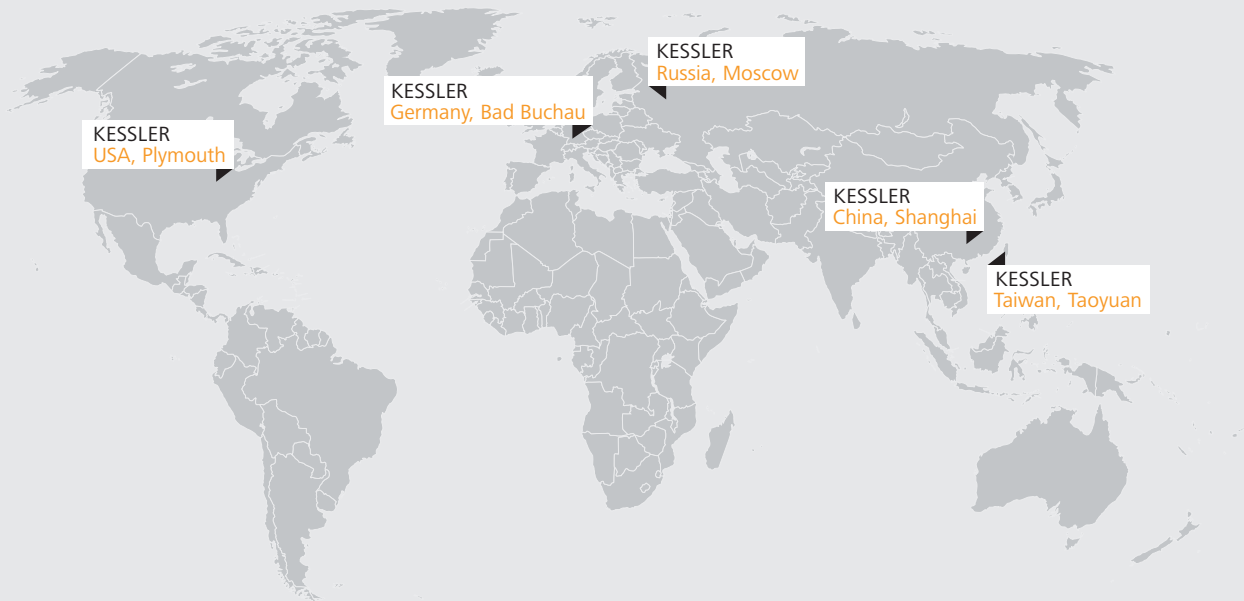


Choose the most suitable **COOLMOTION®** motor from the list of preferred motors

Model	S1			S6 / 40 %		S6 / 25 %		S6 max.		
	Max. speed (rpm)	Torque (Nm)	Power (kW)	Torque (Nm)	Power (kW)	Torque (Nm)	Power (kW)	Torque (Nm)	Power (kW)	
HC600-S5	5,000	1,200	75	1,350	75	1,500	75	1,600	75	HSK A125*

*Availability on request
 Not available with Quick Connect Cartridge (QCC)

Operating Worldwide for our Customers



Germany

Franz Kessler GmbH
 Franz-Kessler-Straße 2
 88422 Bad Buchau, Germany
 Tel.: +49 7582 809 - 0
 Fax: +49 7582 809 - 170
info@kessler-group.biz

USA

KESSLER USA Inc.
 44099 Plymouth Oaks Blvd.
 Plymouth, MI 48170, USA
 Tel.: +1 734 404 0152
 Fax: +1 734 404 0153
info.usa@kessler-group.biz

Russia

KESSLER East Ltd.
 Dorogobuzhskaja str., 14, bld. 6
 121354, Moscow, Russia
 Tel.: +7 495 204 2450
info.ru@kessler-group.biz

Taiwan

KESSLER Taiwan Ltd.
 No.347, Sec. 1
 Nanshan Rd
 Luzhu District
 Taoyuan City 33861
 Taiwan (R.O.C.)
 Tel.: +886 3 326 2256
 Fax: +886 3 355 5014
info.tw@kessler-group.biz

China

**KESSLER (Shanghai)
 Spindle Service Co., Ltd.**
 Building #12
 No.318 Yuanshan Rd
 Minhang District
 201108 Shanghai, China
 Tel.: +86 21 6489 7034
 Fax: +86 21 6489 7134
info.cn@kessler-group.biz