

HEADLINE/MINI 2AH

Compact and highly dynamic



Two-axis heads with KESSLER spindles and motors

Intelligent systems: KESSLER heads think ahead – HEADLINE

Applications with high requirements need a reliable partner. KESSLER systems therefore have a compact design and are extremely flexible, making a whole range of applications possible in just one machine.

KESSLER's latest torque motor generation achieves a high dynamic which is required especially when milling very intricate and narrow workpiece contours.

High positioning accuracy, high clamping force and a large tilting angle ensure that precise results in 5-axis machining are achieved.

KESSLER also offers compatible spindles for use with our 2-axis heads, to fulfil your machining needs.

End-to-end precision from the components to the on-site service

Founded in 1923 by Franz Kessler, the company has developed to become the leading supplier of motor spindles as well as directly driven 2-axis heads and rotary tilt tables for the machine tool industry. KESSLER is proud to list many major companies from the mechanical engineering sector amongst its long-standing customers.

With the expertise of almost 100 years, KESSLER is continuously developing and optimising its products. The KESSLER product range serves a wide range of sectors, processes and applications. Close cooperation with our customers remains our key focus. The extensive product range, from hightech spindles, 2-axis heads, rotary and rotary tilt tables to motors and direct drive systems, enables KESSLER to implement customised solutions with speed and flexibility.

As your service partner, service is our matter of trust and reliability. KESSLER has an established global network of technology and service centres.



HEADLINE / MINI 2AH (QAC)

C-axis (turning axis)

- Torque S1: 560 Nm
- Maximum torque: 1,120 Nm
- Clamping: hydraulic
- Clamping torque: 3,000 Nm
- Tilting angle: $\pm 360^\circ$
- Measuring system: absolute
- Accuracy of measuring system: $\pm 2.8''$

A-axis (tilting axis)

- Torque S1: 400 Nm
- Maximum torque: 800 Nm
- Clamping: hydraulic
- Clamping torque: 3,000 Nm
- Tilting angle: $\pm 110^\circ$
- Measuring system: absolute
- Accuracy of measuring system: $\pm 2.8''$

All 2AHs available with automatic Quick Axis Change (QAC) or as 1AH with solid screw-on flange available.

| Dimensions (mm) | | | |
|-----------------------------|----|-----|-----------|
| Fitting diameter of C-axis | D1 | 335 | — |
| Fitting depth of C-axis | L3 | 630 | — |
| Collision circle C-axis | D2 | 600 | — |
| Width of A-axis | B1 | 550 | — |
| Depth of A-axis | T1 | 340 | — |
| Projection length of A-axis | L2 | 410 | 440 (QAC) |
| Vector length | L1 | 225 | — |
| Gross weight | kg | 500 | — |



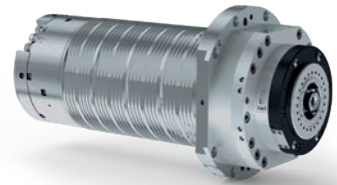
Options

A-axis

- + **Pneumatic clamping**
with safety function
Clamping torque: 2,480 Nm
- + **Measuring system**
with enhanced accuracy $\pm 2.0''$
for use with all standard
control systems
- + **Leakage monitoring**

C-axis

- + **Pneumatic clamping**
with safety function
Clamping torque: 2,480 Nm
- + **Measuring system**
with enhanced accuracy $\pm 2.0''$
for use with all standard
control systems
- + **Horizontal or vertical
installation position**



Motor spindles

| Model | Max. speed (rpm) | S1 | | S6/40 % | | S6/25 % | | S6 max. | | |
|----------|---------------------|----------------|---------------|----------------|---------------|----------------|---------------|----------------|---------------|---------------------|
| | | Torque (Nm) | Power (kW) | Torque (Nm) | Power (kW) | Torque (Nm) | Power (kW) | Torque (Nm) | Power (kW) | |
| MT80-S24 | 20,000 | 26 | 20 | 34 | 26 | 38 | 29 | 45 | 34 | High speed* |
| MT80-S20 | 20,000 | 80 | 45 | 95 | 45 | 110 | 45 | 145 | 45 | High torque* |

*Availability on request
Not available with Quick Connect Cartridge (QCC)

Quick Axis Change (QAC) Automatic A-axis change

QAC enables uncompromising roughing and finishing with one single machine. The head kinematics remains unchanged. Since the projection length of the A-axis (L2) is the same, no space is lost in the machining area.

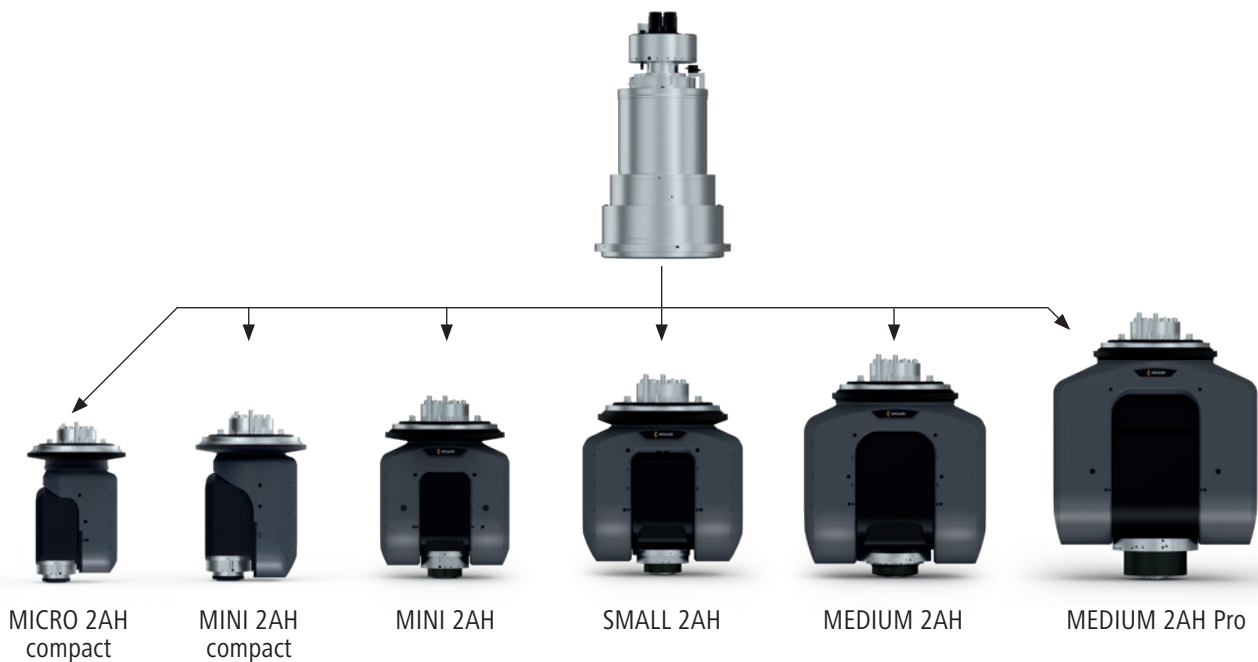
C-axis with changing interface for replaceable heads

QAC MEDIUM

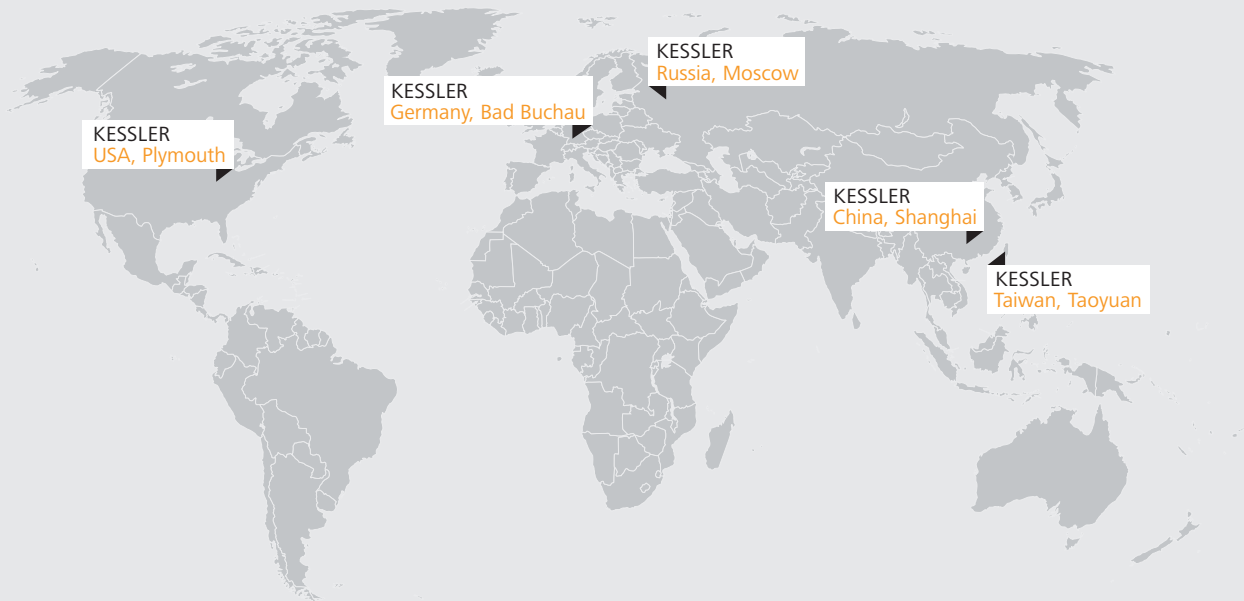
- Torque S1: 2,500 Nm
- Maximum torque: 5,700 Nm
- Clamping: hydraulic
- Clamping torque: 12,500 Nm
- Tilting angle: $\pm 360^\circ$
- Measuring system: absolute
- Accuracy of measuring system: $\pm 2.8''$

Options

- + **Pneumatic clamping**
with safety function
Clamping torque: 9,900 Nm
- + **Measuring system**
with enhanced accuracy $\pm 2.0''$
for use with all standard control systems



Operating Worldwide for our Customers



Germany

Franz Kessler GmbH
 Franz-Kessler-Straße 2
 88422 Bad Buchau, Germany
 Tel.: +49 7582 809 - 0
 Fax: +49 7582 809 - 170
info@kessler-group.biz

USA

KESSLER USA Inc.
 44099 Plymouth Oaks Blvd.
 Plymouth, MI 48170, USA
 Tel.: +1 734 404 0152
 Fax: +1 734 404 0153
info.usa@kessler-group.biz

Russia

KESSLER East Ltd.
 Dorogobuzhskaja str., 14, bld. 6
 121354, Moscow, Russia
 Tel.: +7 495 204 2450
info.ru@kessler-group.biz

Taiwan

KESSLER Taiwan Ltd.
 No.347, Sec. 1
 Nanshan Rd
 Luzhu District
 Taoyuan City 33861
 Taiwan (R.O.C.)
 Tel.: +886 3 326 2256
 Fax: +886 3 355 5014
info.tw@kessler-group.biz

China

**KESSLER (Shanghai)
 Spindle Service Co., Ltd.**
 Building #12
 No.318 Yuanshan Rd
 Minhang District
 201108 Shanghai, China
 Tel.: +86 21 6489 7034
 Fax: +86 21 6489 7134
info.cn@kessler-group.biz