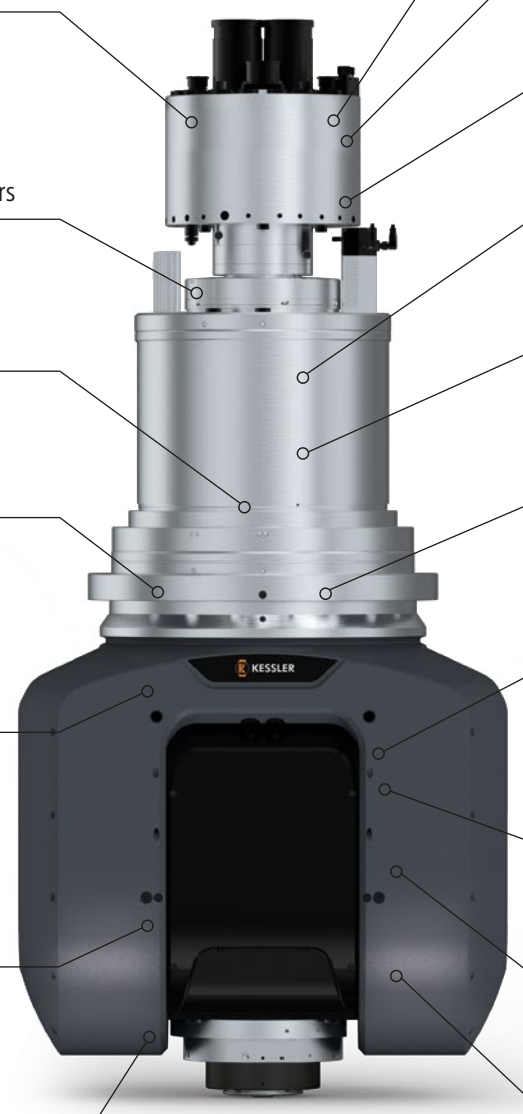


The most powerful 2-axis heads in their class

- Individual configurability due to modular design
- Robust design with monolithic fork
- Reliable skilled partner – for 2-axis heads, spindles and motors
- Precise machining results due to high positioning accuracy
- High maximum torque in the C-axis
- High flexibility – and suitability for numerous applications
- High maximum torque
- High productivity due to high tilting speed
- High accuracy Secondary cooling in the C-axis reduces the heat input in the headstock to a minimum
- High clamping torque in the A-axis
- Highly maintenance friendly Worn parts can be easily replaced on site
- Spindles are optionally available with shaft clamping for turning operations
- in the A-axis due to the newest generation of powerful COOLMOTION® motors
- High degree of operational safety thanks to LEDs due to optimal illumination of the tool intervention
- With new spindle-generation MT + PC line
- With Quick Connect Cartridge (QCC)*



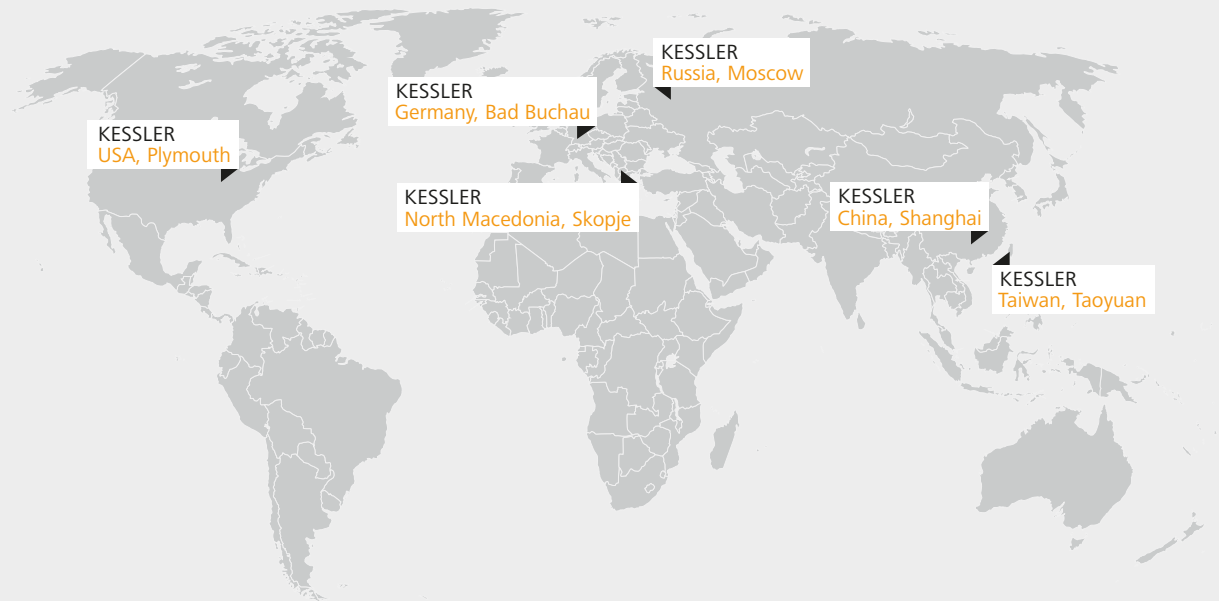
* does not apply to MT80 and MT600



For more information about QCC, go to kessler-group.biz

HIGH QUALITY
MADE IN GERMANY

Operating Worldwide for our Customers



Germany

Franz Kessler GmbH
Franz-Kessler-Straße 2
88422 Bad Buchau, Germany
Tel.: +49 7582 809 - 0
Fax: +49 7582 809 - 170
E-Mail: info@kessler-group.biz

KESSLER energy GmbH
Franz-Kessler-Straße 2
88422 Bad Buchau, Germany
Tel.: +49 7582 809 - 0
Fax: +49 7582 809 - 170
E-Mail: info.energy@kessler-group.biz

North Macedonia

KESSLER Macedonia DOOEL Ilinden
Str. 32, N.21, 1041 Ilinden, Skopje,
Republic of North Macedonia
Tel.: +389 71 381 863
Biljana.Andova@kessler-group.biz

USA

KESSLER USA Inc.
44099 Plymouth Oaks Blvd.
Plymouth, MI 48170, USA
Tel.: +1 734 404 0152
Fax: +1 734 404 0153
E-Mail: info.usa@kessler-group.biz

Taiwan

KESSLER Taiwan Ltd.
No.347, Sec. 1
Nanshan Rd
Luzhu District
Taoyuan City 33861
Taiwan (R.O.C.)
Tel.: +886 3 326 2256
Fax: +886 3 355 5014
E-Mail: info.tw@kessler-group.biz

China

KESSLER (Shanghai) Spindle Service Co., Ltd.
Building #12
No.318 Yuanshan Rd
Minhang District
201108 Shanghai, China
Tel.: +86 21 6489 7034
Fax: +86 21 6489 7134
E-Mail: info.cn@kessler-group.biz

Russia

KESSLER East Ltd.
Dorogobuzhskaja str., 14, bld. 6
121354, Moscow, Russia
Tel.: +7 495 204 2450
E-Mail: info.ru@kessler-group.biz

Head line – the overview

Maximum precision and dynamic for 5-axis machining

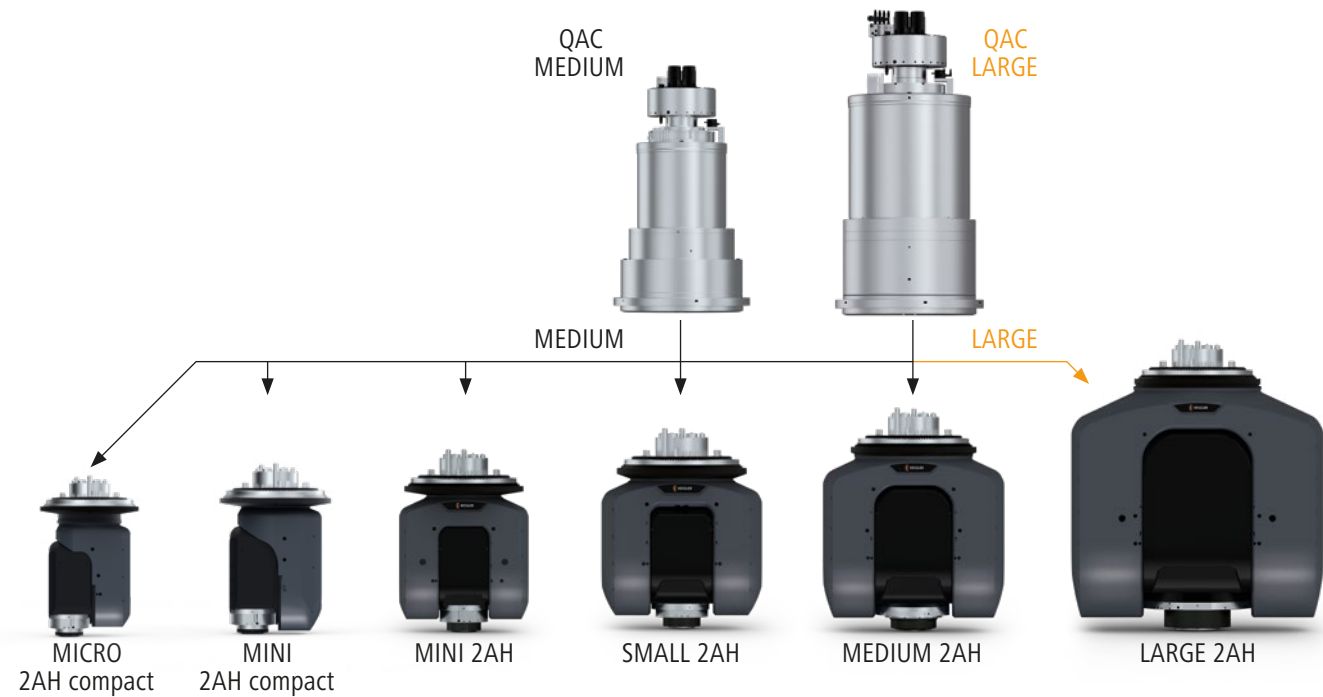


1AH with mounting flange



C-axis with changing interface

+ Fitting-Ø: 540 mm



Unlocking Opportunities

Head size	MICRO compact Fitting-Ø 335		MINI compact Fitting-Ø 335		MINI Fitting-Ø 335		SMALL Fitting-Ø 335 + 390		MEDIUM Fitting-Ø 480 + 540		LARGE Fitting-Ø 540	
Spindle size	MT80		MT80		MT80		MT100		MT400		MT500 + MT600	
	MICRO 2AH compact*		MINI 2AH compact		MINI 2AH		SMALL 2AH		MEDIUM 2AH		LARGE 2AH*	
2-axis												
	Up to 24,000 rpm, 80 Nm / 45 kW (S1)		Up to 24,000 rpm, 80 Nm / 45 kW (S1)		Up to 24,000 rpm, 80 Nm / 45 kW (S1)		Up to 20,000 rpm, 200 Nm / 54 kW (S1)		Up to 15,000 rpm, 500 Nm / 75 kW (S1)		Up to 6,000 rpm, 1,200 Nm / 71 kW (S1)	
A-axis	Clamping torque: 2,000 Nm Torque S1: 175 Nm		Clamping torque: 2,000 Nm Torque S1: 360 Nm		Clamping torque: 3,000 Nm Torque S1: 400 Nm		Clamping torque: 4,000 Nm Torque S1: 1,100 Nm		Clamping torque: 7,400 Nm Torque S1: 2,200 Nm		Clamping torque: 12,500 Nm Torque S1: 6,000 Nm	
C-axis	Clamping torque: 2,000 Nm Torque S1: 175 Nm		Clamping torque: 3,000 Nm Torque S1: 560 Nm		Clamping torque: 3,000 Nm Torque S1: 560 Nm		Clamping torque: 4,000 Nm Torque S1: 1,139 Nm		Clamping torque: 12,500 Nm Torque S1: 2,500 Nm		Clamping torque: 12,500 Nm Torque S1: 6,400 Nm	
All 2AHs are available with automatic A-axis change (QAC) or as 1AH with fixed mounting flange.												

Head size	SMALL Fitting-Ø 335 + 390				MEDIUM Fitting-Ø 480 + 540			
Spindle size	MT100 V100				MT400 V400			
	SMALL 1AH-B				MEDIUM 1AH-B			
1-axis	1AH-B		1AH-B-45		1AH-B		1AH-B-45	
B-axis	Clamping torque: 3,000 Nm Torque S1: 560 Nm		Clamping torque: 3,000 Nm Torque S1: 560 Nm		Clamping torque: 12,500 Nm Torque S1: 2,500 Nm		Clamping torque: 12,500 Nm Torque S1: 2,500 Nm	
C-axis	Up to 20,000 rpm, 200 Nm / 54 kW (S1)		Up to 24,000 rpm, 130 Nm / 30 kW (S1)		Up to 15,000 rpm, 500 Nm / 75 kW (S1)		Up to 15,000 rpm, 550 Nm / 75 kW (S1)	
B-axis*	Clamping torque: 3,000 Nm Torque S1: 560 Nm		Clamping torque: 3,000 Nm Torque S1: 560 Nm		Clamping torque: 12,500 Nm Torque S1: 2,500 Nm		Clamping torque: 12,500 Nm Torque S1: 2,500 Nm	
C-axis*	Up to 20,000 rpm, 200 Nm / 54 kW (S1)		Up to 24,000 rpm, 130 Nm / 30 kW (S1)		Up to 15,000 rpm, 500 Nm / 75 kW (S1)		Up to 15,000 rpm, 550 Nm / 75 kW (S1)	

* Availability on request